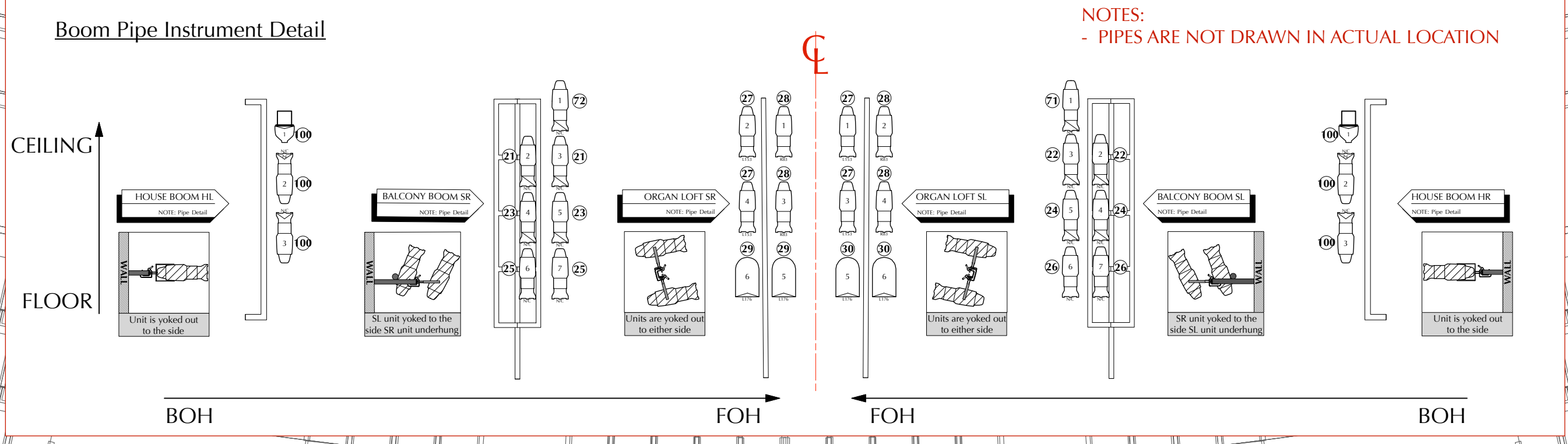


Lineart Position	Type	Pre-hung W/	Size	Notes
1	20' 0"	Schedule 40	4x8x8	Truss Rigged
2	20' 0"	Schedule 40	6x6x6	Truss Rigged
3	10' 0"	2x4x6	2x4x6	Motor Controlled
4	20' 0"	Schedule 40	4x8x8	Motor Controlled
5	20' 0"		Motor System	Truss Rigged
6	20' 0"	Schedule 40	4x8x8	Truss Rigged
7	20' 0"	Schedule 40	4x8x8	Truss Rigged
8	20' 0"	2x4x6	2x4x6	Truss Rigged
9	20' 0"	2x4x6	2x4x6	Truss Rigged



Instruments		Accessories		Label Legend Key		Repertory Light Plot		Personnel		Notes: - Some pipes drawn above are not in correct location, reference pipe label notes for correct location - FOH and 1E truss motor controlled
	10° Scoop		ETC Source-4 Zoom Jr. 25°-50°		Rosco-I-Cue	Repertory Light Plot Feb. 10th, 2017 		C.E.O. Kurt Heitmann	Production Manager Todd Giudice	
	PAR 64 WFL		ETC Source-4 Zoom 15°-30°		6.25" Top Hat			Lighting Director Ro-z Edelston	Master Electrician Megan C. Maguire	
	ETC Source-4 19°		COLORdash Par Hex 12		7.5" Top Hat	Drawing #	Revision Date			
	ETC Source 4 26°		SS Spectra Par 100		Unit	1	01/12/17			
	ETC Source-4 36°		ElekraLite ML-602		Channel	2	02/10/17			
	ETC Source-4 50°		Elation 5-Chan LED Strip Light			Scale: 1/4" = 1'-0"				
	ETC Source 4 PAR (WFL)		Unique² Hazer							