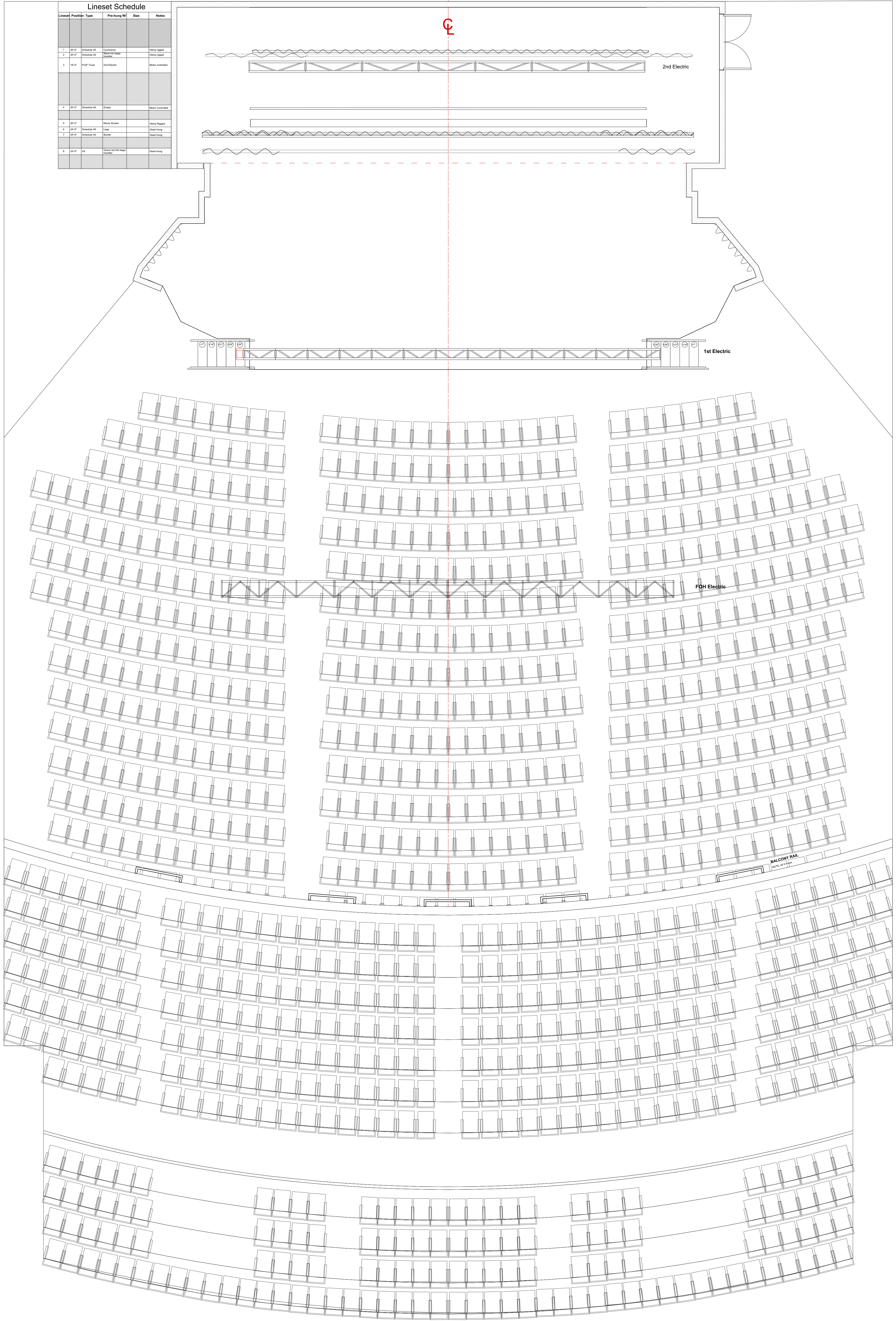


| Lineset Schedule | | | | | |
|------------------|----------|-------------|--------------------|-------|------------------|
| Lineset | Position | Type | Pre-hung Wt | Size | Notes |
| 1 | 2nd Fl | Schedule 40 | Carbon Steel | 16x16 | Truss Support |
| 2 | 2nd Fl | Schedule 40 | Carbon Steel | 16x16 | Truss Support |
| 3 | 1st Fl | PAF Truss | 2nd Electric | | Motor controlled |
| 4 | 2nd Fl | Schedule 40 | Empty | | Motor Controlled |
| 5 | 2nd Fl | | Motor Boxes | | Truss Support |
| 6 | 2nd Fl | Schedule 40 | Light | | Clear Truss |
| 7 | 2nd Fl | Schedule 40 | Truss | | Clear Truss |
| 8 | 2nd Fl | PA | Truss and 1E Motor | | Clear Truss |



Repertory Light Plot

Jan. 12th, 2017



Drawn By: Megan C. Maguire

C.E.O.

Kurt Heitmann

Lighting Director

Ro-z Edelston

Production Manager

Todd Giudice

Drawing #

1

2

Revision Date

01/12/17

01/19/17

Scale: 1/4" = 1'-0"

Notes:

- Some pipes drawn above are not in correct location, reference pipe label notes for correct location
- FOH and 1E truss motor controlled